

# SABRE AIRCRAFT TOOLS

## Angle Drill 1/4"-28 Accessories

### Drill Collets

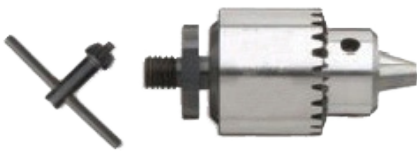


Part No.	Drill Size
SA930938	3/32" – .0938
SA930980	#40 – .0980
SA931250	1/8" – .1250
SA931285	#30 – .1285
SA931440	#27 – .1440
SA931562	5/32" – .1562
SA931590	#21 – .1590
SA931610	#20 – .1610
SA931660	#19 – .1660

Part No.	Drill Size
SA931770	#16 – .1770
SA931850	#13 – .1850
SA931875	3/16" – .1875
SA931910	#11 – .1910
SA931935	#10 – .1935
SA931990	#8 – .1990
SA932460	"D" – .2460
SA932550	1/4" – .2500

Part No.	Drill Size
SA931024	2.6mm – .1024
SA931063	2.7mm – .1063
SA931220	3.1mm – .1220
SA931260	3.2mm – .1260
SA931417	3.6mm – .1417
SA931614	4.1mm – .1614
SA931654	4.2mm – .1654
SA932047	5.2mm – .2047
SA932441	6.2mm – .2441
SA932598	6.6mm – .2598

**Mini Chuck**  
0-5/32"



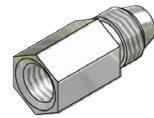
**Part No.**  
SA13500

**3 Jaw Mini Chuck**  
1/16" to 1/4" Cap



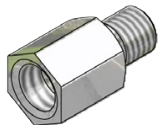
**Part No.**  
SA15003

**Adapter**  
9/32"-40 to 1/4"-28  
Female



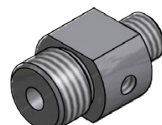
**Part No.**  
SA95005

**Adapter**  
1/4"-28 to 9/32"-40  
Female



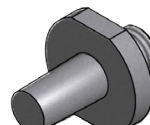
**Part No.**  
SA95006

**Adapter Rotabroach**  
1/4"-28 to 3/8"-24  
Male



**Part No.**  
SA95007

**Adapter**  
1/4"-28 to OMT



**Part No.**  
SA95008

**Safety Precaution:** Read and follow all safety and operating instructions.  
**WARNING:** Face and eye protections must be worn while operating power tools, per ANSI B186.1

Products and specifications subject to change without prior notice.



www.sabretools.com  
info@sabretools.com